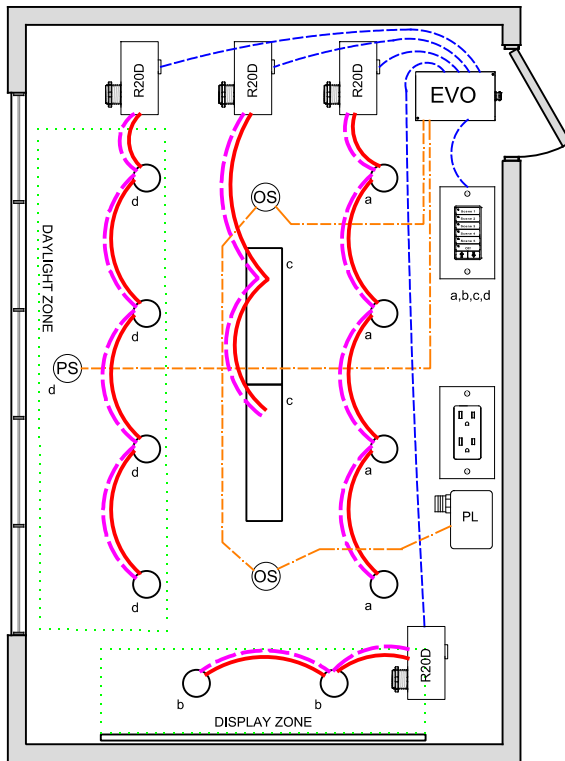


CONFERENCE ROOM IECC 2021 DESIGN GUIDE



OVERVIEW:

Lighting zones are controlled together or individually with 0-10V dimming, Occupancy On-50% / Off, local digital control stations.

SEQUENCE OF OPERATION:

Lights turn on at digital switch station. Occupancy sensor input set for On-50%/vacancy-off control. Dimmer outputs provide smooth full range control, zones can be set for adjustable start level from occupancy or digital switch. Digital scene switch station provides recall and capture of scenes and dimming, plus dimming for all zones as one. Photo Sensor monitors daylight and limits the maximum light level in the daylight zone, multiple zones can be controlled from one sensor with independent level settings for each. (Not required in rooms windows or that have a load <150W in sidelight)

ADDITIONAL OPTIONS:

Up to 4-zones with single LLEVO panel, additional LSEVO-4X, -8X expansion panels available for up to 20 zones. Additional LightSync switch stations as needed up to 32. Optional LightSync Touch Screen station with scene recall, capture and slide dimmer control. AV interface for RS-232/485, Mobile LS Link APP interface. LLEVO control panel can connect to ILC network for building control (C405.2.2.1). Emergency lighting control bypass relay for UL-924 can be added as needed.

CODE REQUIREMENTS SUPPORTED:

Auto On-50% /Off Occupancy sensor (C105.2.1.1)
Daylight control (C405.2.4)
Automatic receptacle control (C405.11.1)

WIRE LEGEND

—	Line voltage
---	0-10V Dimming
---	CAT-5e Data cable
---	3-Wire Occupancy Sensor or Photo Sensor

Bill Of Material:

Qt:	Product:	Description:
1	LLEVO	EVO Controller
4	R20D	Remote 20Amp Dimming relay
2	LSG3-WH-5-S	LightSync G3 5 Scene dimming digital switch station.
1	PS-IND	Photo Sensor - Indoor.
2	ILC-SWX-221-1	Occupancy sensor ceiling Dual Tech - 500sf
1	ILC-SWX-900-AX	Plug Load power pack

LLEVO Pre-Program: FC